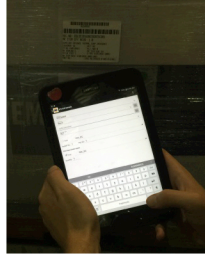
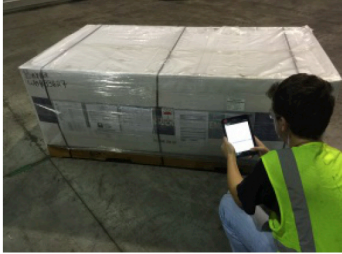


Meticulous Inventory Control



Problem:

Our client is the world's largest manufacturer of power generation equipment for use in power plants. The installation of a new power plant is a massive undertaking, involving the coordination of multiple contractors and relying on each to meet the project schedule. It is therefore essential that the correct cargo arrives at the correct jobsite at the correct time in perfect condition for installation. Project delays are typically subject to enormous liquidated damages and consequent irrecoverable damage to client relationships.

Dockside Logistics operates multi-location warehousing and packaging operations for all U.S.-manufactured components of our client's power generation business so we are pivotal to the successful outcome of all projects.

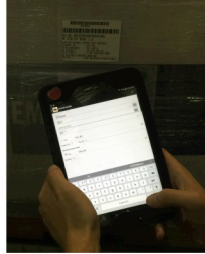
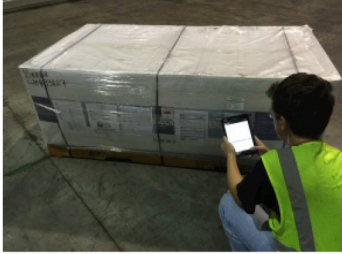
Solution:

Our scope of services includes:

- Over 2 million cubic feet of cargo packed annually
- Inventory control via WMS, scanning:
 - Receipt of inbound handling units into inventory
 - All intra-facility location changes
 - Packaging of received cargo into our export packaging
 - Delivery of crates to POE
 - Placement of crate onto relevant vessel load list
 - Export shipment
- 100% on-time shipping
- 100% shipping accuracy
- 100% inventory accuracy
- Zero damage

In 2016 Dockside migrated from purely operational as users/locations in our client's Oracle system to a full-blown EDI with our own WMS.

Meticulous Inventory Control



Solution Continued

This has allowed us to significantly cut down on duplicated/redundant processes (such as receiving in 2 systems using different hand held scanners) and has given our client greater visibility to their cargo, down to precisely where in our facility it rests, and its current stage in the packaging process.

Dockside's impeccable service performance has allowed us to enjoy a 10 year history with this Fortune 15 client, and the results we've delivered have led to a single-souce supplier status and a multi-year service agreement.

For this client, Dockside manages inventory & activity in client's own proprietary WMS.

Services Used:

- Receiving & Inventory Control
- Trans Loading
- Dedicated Space
- Multiple Facility/Location service
- Value-Added Services (Quality Control)
- Engineering & Consulting:
 - Packaging Engineering
 - Process Design & Engineering
- Transportation
- Onsite/In Plant Services